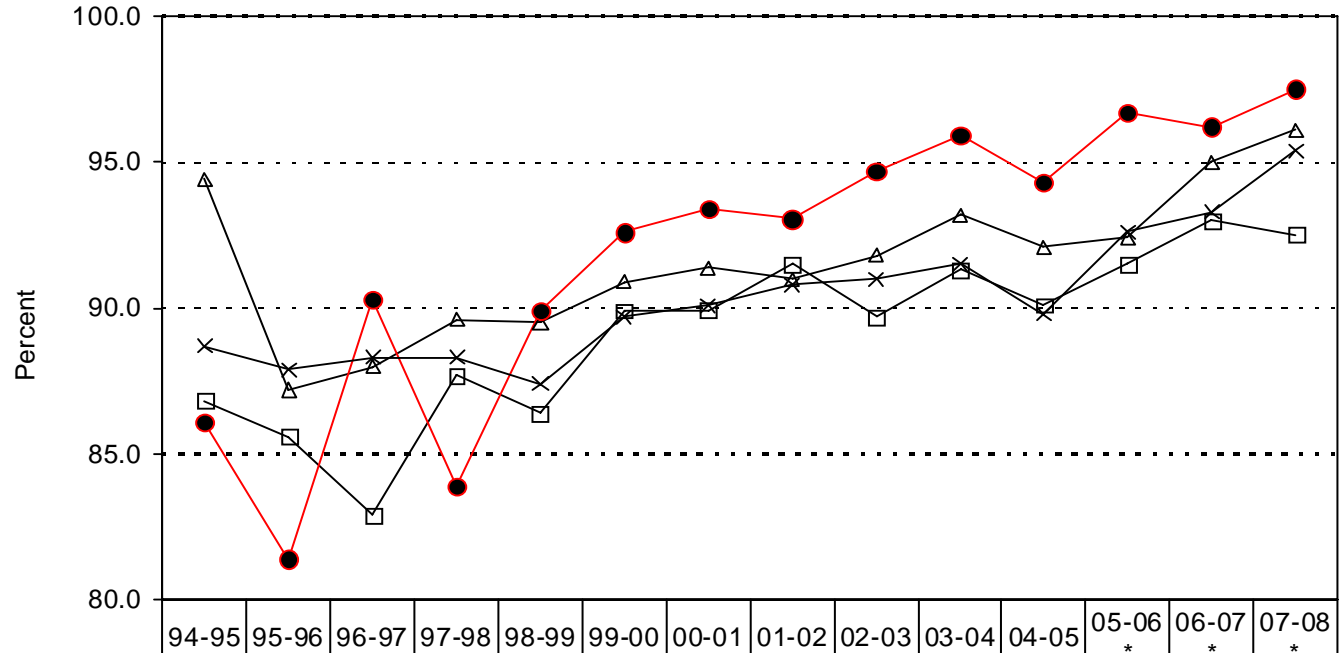


Texoma Tech Prep Consortium

Regional Graduation Rates¹



□ All other students (0, 1)	86.8	85.6	82.9	87.7	86.4	89.9	89.9	91.5	89.7	91.3	90.1	91.5	93.0	92.5
△ C/T students not tech prep (2)	94.4	87.2	88.0	89.6	89.5	90.9	91.4	91.0	91.8	93.2	92.1	92.4	95.0	96.1
● Tech prep students (3)	86.1	81.4	90.3	83.9	89.9	92.6	93.4	93.0	94.7	95.9	94.3	96.7	96.2	97.5
× Tech prep students (3) - State of Texas	88.7	87.9	88.3	88.3	87.4	89.7	90.1	90.8	91.0	91.5	89.8	92.6	93.3	95.4

*** NOTE: 2005-2006 data began new baseline, which utilized a revised formula to calculate data.**

¹ Texas Education Agency, PEIMS