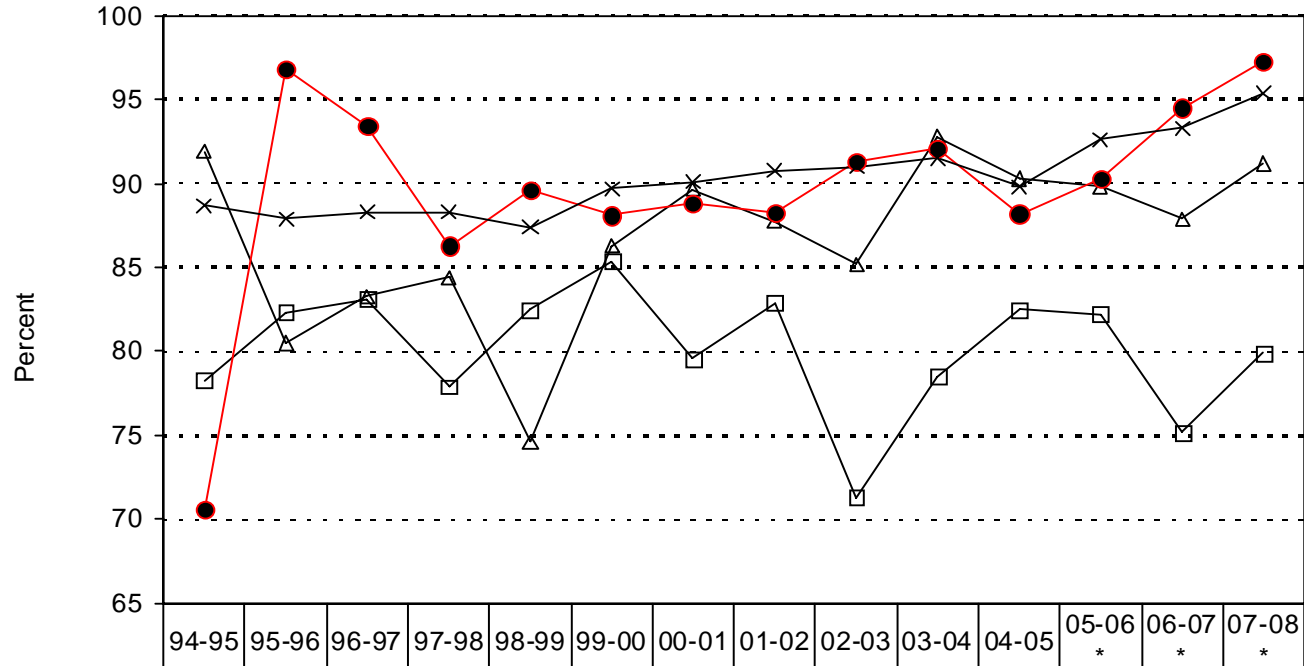


South Texas Tech Prep Consortium

Regional Graduation Rates¹



	94-95	95-96	96-97	97-98	98-99	99-00	00-01	01-02	02-03	03-04	04-05	05-06 *	06-07 *	07-08 *
—□— All other students (0, 1)	78.3	82.3	83.1	77.9	82.5	85.4	79.6	82.9	71.3	78.5	82.5	82.2	75.2	79.9
—△— C/T students not tech prep (2)	91.9	80.5	83.3	84.4	74.6	86.3	89.7	87.7	85.2	92.8	90.3	89.8	87.9	91.2
—●— Tech prep students (3)	70.6	96.8	93.4	86.3	89.6	88.1	88.8	88.3	91.3	92.1	88.2	90.3	94.5	97.3
—×— Tech prep students (3) - State of Texas	88.7	87.9	88.3	88.3	87.4	89.7	90.1	90.8	91.0	91.5	89.8	92.6	93.3	95.4

*** NOTE: 2005-2006 data began new baseline, which utilized a revised formula to calculate data.**

¹ Texas Education Agency, PEIMS