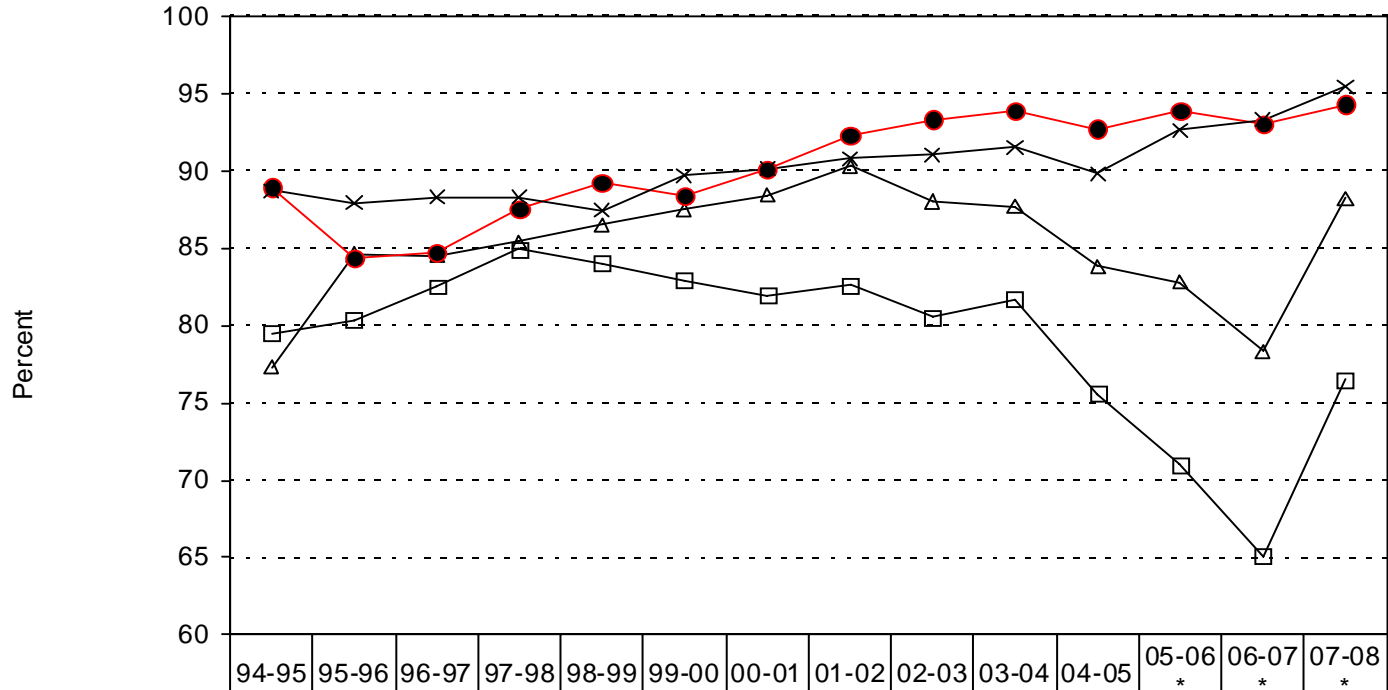


Tech Prep of the Rio Grande Valley, Inc.

Regional Graduation Rates¹



	94-95	95-96	96-97	97-98	98-99	99-00	00-01	01-02	02-03	03-04	04-05	05-06 *	06-07 *	07-08 *
—□— All other students (0, 1)	79.5	80.3	82.5	84.9	84.0	82.9	81.9	82.6	80.5	81.7	75.6	71.0	65.1	76.5
—△— C/T students not tech prep (2)	77.3	84.6	84.5	85.4	86.5	87.5	88.4	90.3	88.0	87.7	83.8	82.8	78.3	88.2
—●— Tech prep students (3)	88.9	84.3	84.7	87.5	89.2	88.4	90.1	92.3	93.3	93.9	92.7	93.9	93.0	94.3
—×— Tech prep students (3) - State of Texas	88.7	87.9	88.3	88.3	87.4	89.7	90.1	90.8	91.0	91.5	89.8	92.6	93.3	95.4

* NOTE: 2005-2006 data began new baseline, which utilized a revised formula to calculate data.

¹ Texas Education Agency, PEIMS