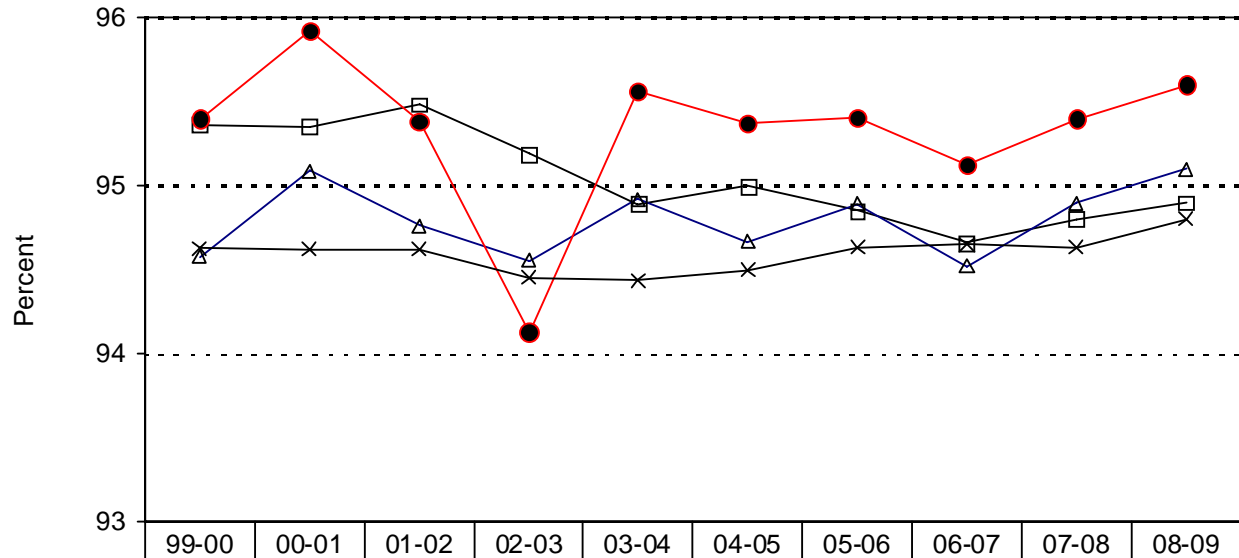


Weatherford College Tech Prep Consortium

Regional Annual Attendance Rates – Grades 9-12¹



	99-00	00-01	01-02	02-03	03-04	04-05	05-06	06-07	07-08	08-09
—□— All other students (0, 1)	95.4	95.4	95.5	95.2	94.9	95.0	94.9	94.7	94.8	94.9
—△— CT students not tech prep (2)	94.6	95.1	94.8	94.6	94.9	94.7	94.9	94.5	94.9	95.1
—●— Tech prep students (3)	95.4	95.9	95.4	94.1	95.6	95.4	95.4	95.1	95.4	95.6
—×— Tech prep students (3) - State of Texas	94.6	94.6	94.6	94.5	94.4	94.5	94.6	94.6	94.6	94.8

*Attendance rates are rounded.

¹ Texas Education Agency, PEIMS