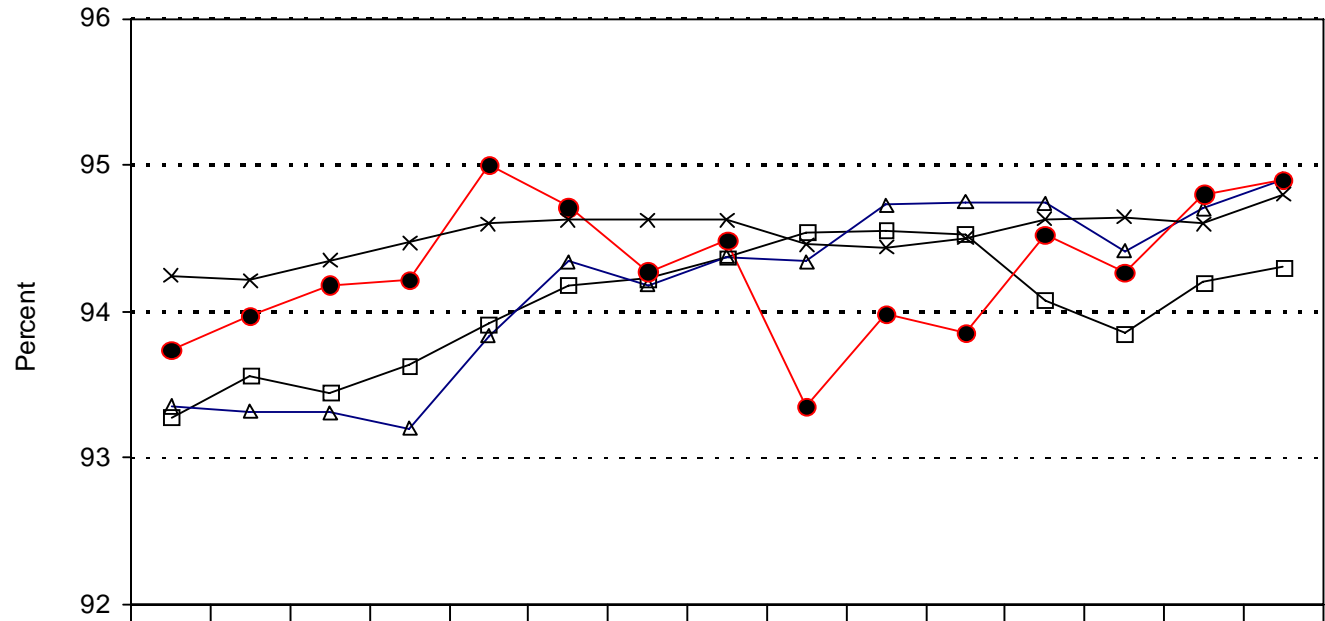


## North Central Texas Tech Prep Consortium

### Regional Annual Attendance Rates – Grades 9-12<sup>1</sup>



	94-95	95-96	96-97	97-98	98-99	99-00	00-01	01-02	02-03	03-04	04-05	05-06	06-07	07-08	08-09
—□— All other students (0, 1)	93.3	93.6	93.4	93.6	93.9	94.2	94.2	94.4	94.5	94.6	94.5	94.1	93.9	94.2	94.3
—△— CT students not tech prep (2)	93.4	93.3	93.3	93.2	93.8	94.3	94.2	94.4	94.3	94.7	94.8	94.7	94.4	94.7	94.9
—●— Tech prep students (3)	93.7	94.0	94.2	94.2	95.0	94.7	94.3	94.5	93.4	94.0	93.9	94.5	94.3	94.8	94.9
—×— Tech prep students (3) - State of Texas	94.2	94.2	94.3	94.5	94.6	94.6	94.6	94.6	94.5	94.4	94.5	94.6	94.6	94.6	94.8

\*Attendance rates are rounded.

<sup>1</sup> Texas Education Agency, PEIMS